



Product Information Sheet

Benzaldehyde

FCC grade

Global leading position in benzaldehyde.

Emerald Kalama Chemical is the leading producer of benzaldehyde. We produce benzaldehyde using the toluene oxidation process in the largest plant in the world in Rotterdam and our world-scale operation in Kalama, WA USA.

In contrast to benzaldehyde produced by other manufacturers via the toluene chlorination process, benzaldehyde produced by Emerald Kalama Chemical at both our operations contains no chlorine.

Our global leading position as benzaldehyde producer enables us to set the standard for quality, reliability and security of supply.

Emerald Kalama Chemical Rotterdam produces a high quality Benzaldehyde (FCC) suitable for the most critical applications.

Applications for Benzaldehyde:

- aroma chemicals
- pharmaceuticals
 - phenylglycine
 - (pseudo) ephedrine
 - anti-hypertensives
 - and more
- agrochemicals
- various other applications

The right quality for your applications.

Benzaldehyde is a versatile building block in the synthesis of many different complex molecules for use in products ranging from pharmaceuticals to plastic additives.

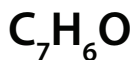
Its unique sweet, aromatic note, reminiscent of the taste and odor of almonds, makes benzaldehyde an important component in the formulation of F&F products. The almond flavor and fragrance are found in soft drinks and in all kinds of perfumes. It is also a building block in the synthesis of fragrances like rose and jasmine, which are used in soaps and perfumes.

Benzaldehyde is an FDA-sanctioned synthetic flavouring substance, generally recognized as safe for foods (GRAS). Benzaldehyde is used for the production of pharmaceuticals guarding against high blood pressure and for pseudoephedrine, the active ingredient in most cough syrups. It is also used in a range of insecticides (pyrethroids), marketed under some well-known trademarks, and in the synthesis of the malachite green pigment.

Benzaldehyde is further used as a building block for a range of amino acids like phenylglycine, that is used as a side chain in various antibiotics.

Benzaldehyde

FCC grade





CAS No. 100-52-7

EINECS No. 202-860-4

PRODUCT SPECIFICATION

Characteristic	Spec. Range	Unit
Assay	99.5 min.	wt %
Toluene	0.01 max.	wt %
Acidity (as benzoic acid)	0.2 max.	wt %
Chlorine	1 max.	mg/kg

This material meets the requirements of FCC is certified Kosher and Kosher for Passover  and certified  Halal.

About Emerald.

Emerald Kalama Chemical is Division of Emerald Performance Materials, a manufacturer of additives and polymers that make your products last longer, look, taste, smell, or perform better. The company has 4 business units, six operations and more than 700 employees. The Emerald Kalama Chemical business group is a world-scale producer of a variety of toluene oxidation products, with production facilities in the US and Europe. Products include benzoic acid and various benzoate and dibenzoate ester, alcohol and aldehyde derivatives for food preservatives, flavor and fragrance ingredients, plasticizers and industrial applications. For more about Emerald, visit www.emeraldmaterials.com.

ADDITIONAL PRODUCT INFORMATION

Appearance	Colorless liquid
Odor	Almond-like
Density	1043 - 1049 g/dm ³ (20 °C)
Refractive index	1.544 - 1.546 (20 °C)
Solubility (in water)	6.55 g/l (25 °C)
Solidification Point	-26 °C
Packaging	In bulk, steel drums and IBCs
Steel drum information	Net weight 210 kg, tare weight 8.5 kg, 58X58X93 cm
IBC information	Net weight 1000 kg, tare weight 60 kg, 120X100X116 cm
Storage	Under nitrogen
Shelf life	2 years
Stabilizing agents	None
Additives	None



Customer Service: USA

1499 SE Tech Center Pl, Ste 300
Vancouver, WA 98686 USA

+1 800 223 0035

kalama@emeraldmaterials.com

Customer Service: Europe

PO Box 601
6160 AC Geleen, The Netherlands

+31 88 888 0520

purox.info@emeraldmaterials.com

Customer Service: United Kingdom

Dans Road
Widnes, Cheshire, WA8 0RF, UK

+44 151 423 8101

kalama.uk@emeraldmaterials.com

Customer Service: Asia Pacific

1708 Shui on Centre, 6-9 Harbour Rd
Wanchai, Hong Kong

+852 2598 7990

www.kalama.emeraldmaterials.com